

# Classic Rustic®



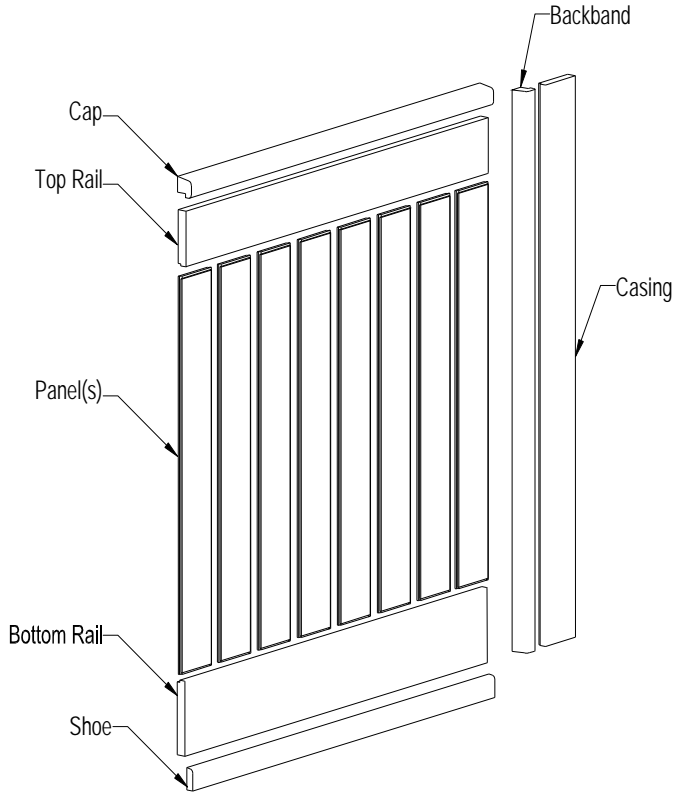
New England Classic® introduces *Classic Rustic®* - crafted with pillow edged rails, chair rail and panels. Each component is hand scraped, carved and finished to portray a rugged timeless beauty.

# Classic Rustic® System

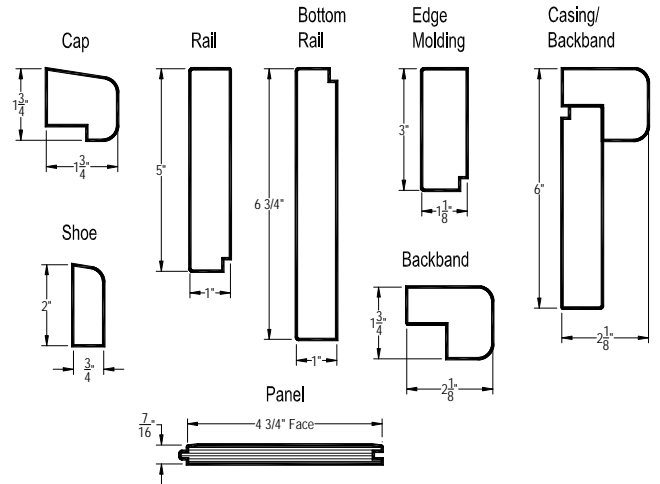
Classic Rustic® system is available in two standard heights.

36" Height = FramePak® + 23" Rustic PanelSet®

44" Height = FramePak® + 31" Rustic PanelSet®



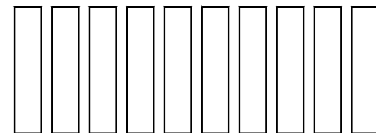
## Classic Rustic® Components



Classic Rustic® Components are packaged for convenient ordering, handling and use.

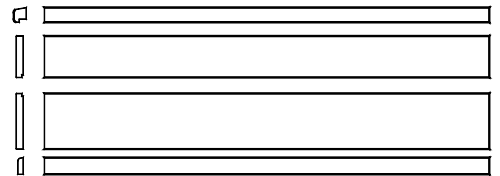
### PanelSet®

Available in 5" x 23" or 5" x 31" panel sizes.  
Each package contains:  
10 panels = 4 feet lineal wall coverage



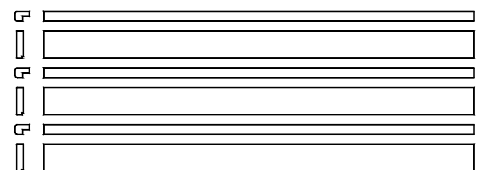
### FramePak®

Each package contains (96" length):  
1 - Cap  
1 - Rail  
1 - Bottom Rail  
1 - Shoe



### CasingPak®

Window and door trim designed to match.  
Each package contains (96" length):  
3 - Caps  
3 - Rails



## PART 1.0 GENERAL

### 1.1 DESCRIPTION

A. Wood wainscoting and wall panel systems shall be the Classic Rustic® panel system manufactured by New England Classic®.

### 1.2 SUBMITTALS

B. Submit manufacturer's literature and installation instructions to determine layout requirements

### 1.3 DELIVERY, STORAGE, AND HANDLING

A. Delivery of Product: The Classic Rustic® panel system shall be delivered to the job site in the manufacturer's original packaging with the manufacturer's identification intact and legible.

B. Storage & handling: The Classic Rustic® panel system shall be stored and handled in such a way to protect against contact with water, exposure to weather, breakage and damage.

Do not store directly on concrete without a plastic sheet as a moisture barrier.

### 1.4 LIMITATIONS

A. Moisture Conditions: The Classic Rustic® panel system shall not be used in wet or damp areas.

B. Temperature conditions: The Classic Rustic® panel system shall not be used in contact with surfaces where temperatures exceed 120° F.

## PART 2.0 PRODUCTS

### 2.1 ACCEPTABLE MANUFACTURER

New England Classic  
4145 Parkway Drive  
Florence, AL 35630

### 2.2 MATERIALS

A. Substrate shall be industrial grade class 3; or moisture resistant MDF, product class MD - that conform with ANSI A208.2-1994.

Panel substrate shall be 7-ply veneer core plywood, bonded with Type II adhesive in accordance with ANSI/HPVA HP-1-1994. Substrate may be sprayed with a fire retardant finish to achieve a class 1 fire rating.

B. Adhesive for bonding veneers to substrate shall be PVA, EVA, or PUR type adhesive.

C. Real wood veneer shall be grade-B, hand scraped and carved to a "Medium" distressed level per NEC visual specifications.

D. Factory finish shall be either lacquer or conversion varnish per Architectural Woodwork Institute (AWI) Custom Grade Specifications: TR-2 and OP-2 for lacquer, and TR-4 and OP-4 for conversion varnish finish.

### 2.3 COMPONENTS

#### A. Panel:

5" x 23 1/2" x 7/16" thick

5" x 31 1/2" x 7/16" thick

#### B. Cap:

1 3/4" x 1 3/4" x 96" long

#### C. Top & Casing Rail:

1" x 5" x 96" long

#### D. Base Rail:

1" x 6 3/4" x 96" long

#### E. Shoe:

3/4" x 2" x 96" long

#### F. Edge Molding:

1 1/8" x 3" x 34 3/4" long

1 1/8" x 3" x 42 3/4" long

## PART 3.0 INSTALLATION

### 3.1 INSTALLATION

A. Install per manufacturer's recommendations using the provided instructions.

## 3.2 WARRANTY

A. Manufacturer shall furnish a five year warranty against defects in material, delamination and workmanship for parts only. Removal labor, reinstallation labor and freight are not included.

## 3.3 MATERIALS ACCEPTANCE

A. City of New York  
MEA 190-99-M

## PART 4.0 FINISHING & MAINTENANCE

### 4.1 UNFINISHED

A. Fill all nail holes and splices with matching wood filler. Sand wood filler patches smooth to the veneer surface with 180 grit paper, taking care not to sand through the veneer. Apply stain, sealer and clear finish coat, lightly sanding between coats with 220 grit paper. We recommend applying a light coat of lemon oil or furniture oil to replenish the natural sheen, especially in dry environments.

### 4.2 FINISHED

A. Use matching color putty to fill fastener holes. A matching stain kit is included with factory finished product.



*What better walls are wearing®*

New England Classic New England Classic  
4145 Parkway Drive  
Florence, AL 35630  
(888) 460-6324  
design@newenglandclassic.com  
Fax (931) 268-4541  
NewEnglandClassic.com